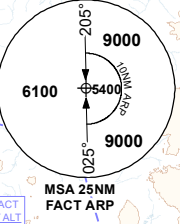


ELEV, ALT & HGT IN FEET
DIST IN NM
BRG ARE MAG
VAR 25°W (2018)

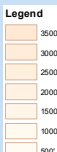
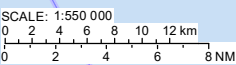
RNP 0.3 GNSS REQUIRED

NOTE
1. Only specifically certified pilots and aircraft are allowed to fly this approach.
2. Hold MAX 230KT IAS.

SPEED RESTRICTIONS
1. DO NOT EXCEED 230KT IAS UNTIL CT406.



**CAPE TOWN
FACT ARP**
33°58'16.93"S
018°36'15.45"E

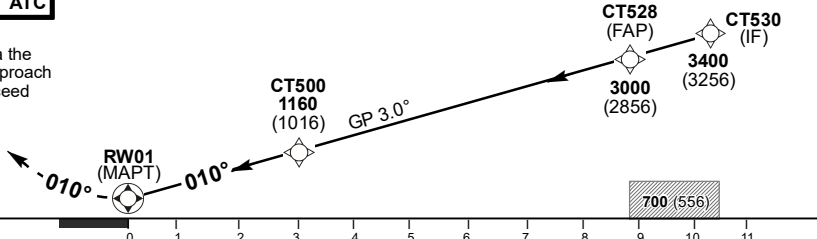


DIST (NM) to THR 01	8.8	7	6	5	4	3	2	0
DIST (NM) to Next WPT	FAP	FAP	FAP	FAP	FAP	FAP	CT500	RW01
ADVISORY ALT (HGT)	3000 (2856)	2430 (2286)	2110 (1966)	1800 (1656)	1480 (1336)	1160 (1016)	840 (696)	

TRANSITION ALT 7500
TRANSITION LEVEL ATC

INA ALT: 6100 or higher MSA

MISSED APPROACH:
Climb to 6100FT ALT via the RNAV (RNP) Missed Approach Track to RIV. Do not exceed 230KT IAS until CT406.



RDH 61
THR ELEV 144
NM to/from THR RWY 01

MIN TEMP: -1°C	OCA (H)	C	D	GS	KT	80	100	120	140	160
Straight-in Approach	RNP 0.3	5.1%	460 (316)	470 (326)	FAP to MAPT	M:S	6:36	5:16	4:24	3:46
		4.5%	1130 (986)	1130 (986)			5:16	4:24	3:46	
		3.5%	2230 (2086)	2230 (2086)			4:23	5:29	6:34	
		2.5%	3340 (3196)	3340 (3196)			5:29	6:34	7:40	
Rate of descent				FPM		423	529	634	740	846

NOTE:
1. For A330, speed brake may be required to maintain the vertical profile.

CHANGE: Obstacle data updated